

Differentiating some SOGI Inclusive Language

Gender Neutrality

not relating or specific to people of one particular gender.

"We don't recognize gender."

Neutrality aims to remove gender from the context, whereas expansivity extends consideration to genders outside of the conventional binary.

Some contexts to consider:

- Menstrual Products
- Greetings
- Washrooms

Gender Expansivity

when a person's identity or behavior is broader than the commonly held definitions of gender and gender expression in one or more aspects of their life.

"We recognize all genders."



SOGIE - Sometimes the acronym includes the letter "E" to differentiate Gender Expression.

SOGI

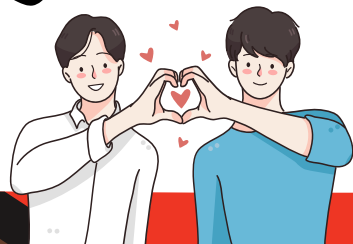
(Sexual Orientation and Gender Identity)

Unlike acronyms like LGBTQ+, SOGI is a subject or topic and not a list of specific identities. It is an inclusive term that is relevant to all individuals, as every person has a sexual orientation and every person has a gender identity.

Used for TOPICS
i.e. SOGI policy or SOGI Inclusive Education

NOT used for PEOPLE
i.e don't refer to individuals or communities as SOGIs

Communities



2S = Two Spirit
L = Lesbian
G = Gay
B = Bisexual
T = Transgender
Q = Queer or Questioning
I = Intersex
A = Asexual

LGBTQ+
The acronym used in some policy and supporting documents

2SLGBTQ+
Used on the Provincial Government's website (recognizing that a variety of acronyms exist)

2SLGBTQI+
Used in communications by the Federal Government

2SLGBTQIA+
Often, but not exclusively, used by community and advocacy groups

Transparency

Consult with your community & have clarity about which acronym or term you use.

QUEER

Many prefer the term Queer because it doesn't require specific definitions of sexual orientation or gender identity. It can also continue to be used regardless of how a person's identity evolves.

A reclaimed term, "Queer" emerged in the 1990's as a political identity counter to other mainstream gay & lesbian movements.

Has become increasingly common to use as an umbrella term for communities (i.e The Queer Community), or genres (i.e. Queer Cinema or Queer Literature). It can be problematic when using it to describe individuals as many folks have experienced a history of the word being weaponized against them.

Self-Identification

LGBTQ+ folks rely heavily on self-identification. People are often asked how they identify on forms or in interpersonal interactions.

CONFIDENT
IN MY OWN
SKIN

Affirmative Language

They are non-binary.
She is trans.

They identify as non-binary.
She identifies as trans.

Relying on "identifies as" language can imply a person's identity is questioned, rather than accepted and can subject gender expansive people to transphobic ridicule like "I identify as an attack helicopter."